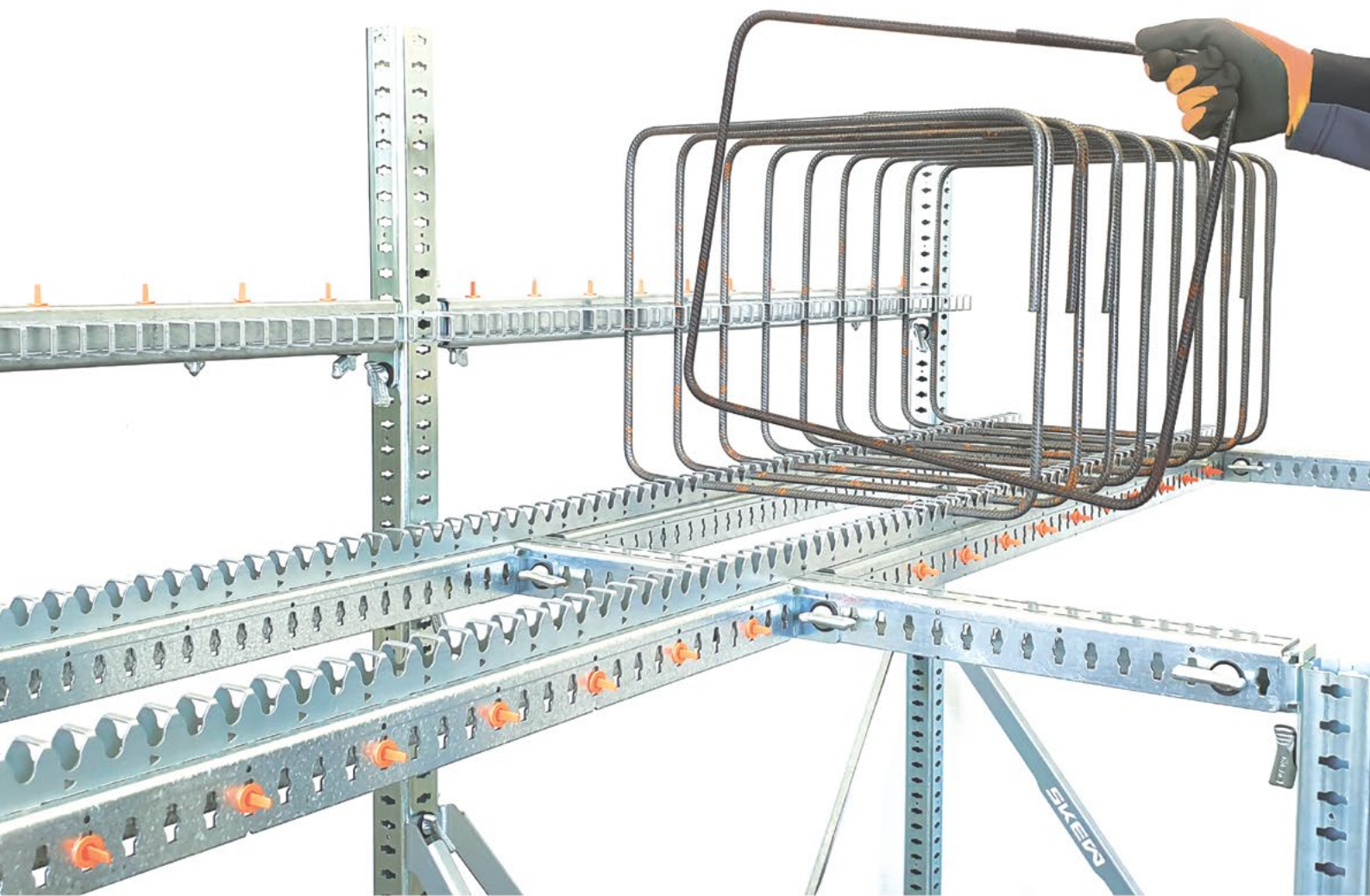


# SKED

## ↑↑↑ JIG SYSTEMS



# Reinforcement Assembly System



## SKEW JIG System

The SKEW JIG System is the fully modular, rebar welding and/or tying workbench for the concrete reinforcement industry. A hardwearing assembly system on which you can first place your rebar (stirrups/links, rings) freestanding, feed the bars through and weld or tie the element in place. All the while ensuring the perfect measurements and spacing, and proper concrete cover.

Not only does the SKEW JIG System improve quality, speed and safety, the workbench is entirely adjustable for the perfect fit for your specific reinforcement cages.

It is engineered to be a precise, ergonomic workstation for your workers and is easily accessible, even for less experienced personnel.

The SKEW JIG System is available in infinite configurations.



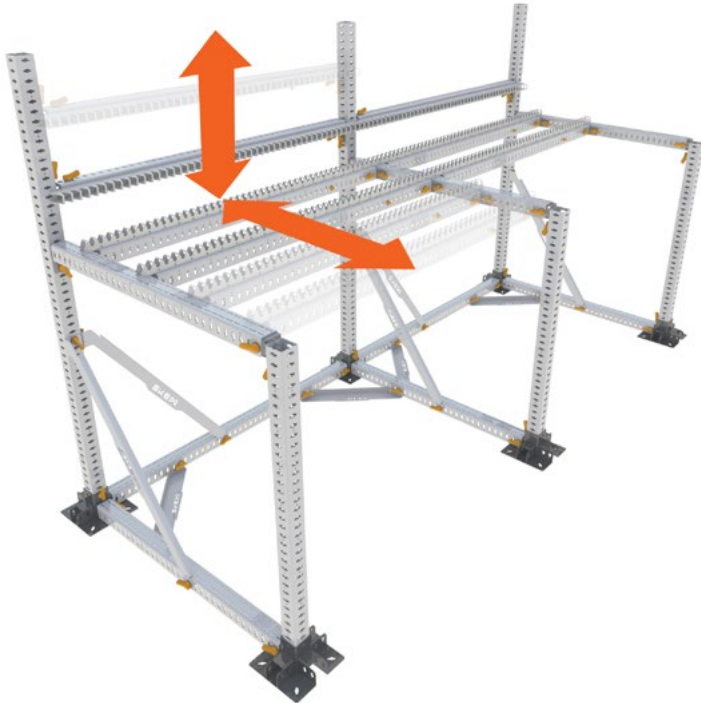




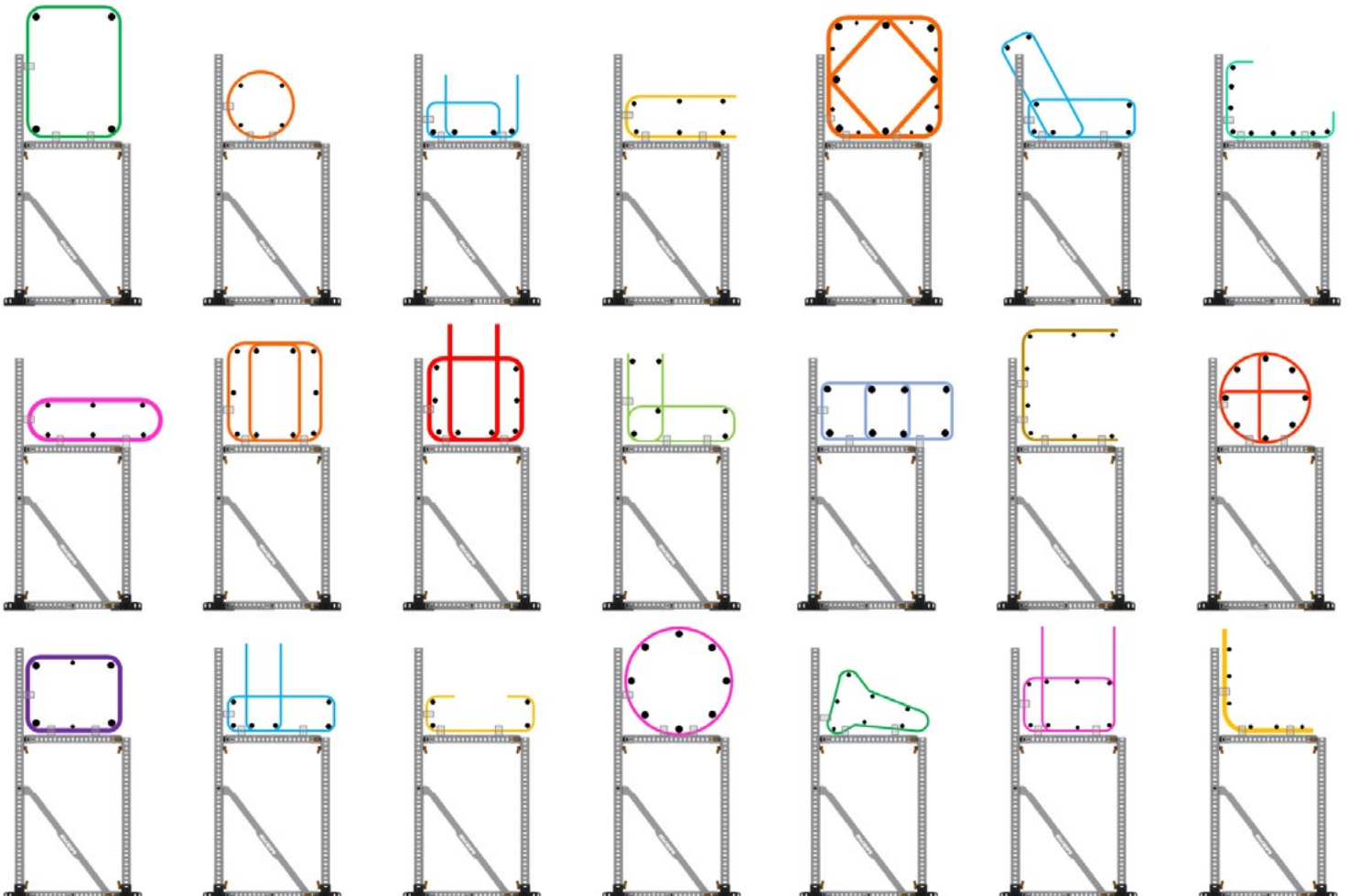
## Positioning rebar on the JIG System

The SKEW JIG System is equipped with smart rebar grips to allow the stirrups, links, bars and rings to be positioned at the correct spacing.

Rebar grips are easily rearranged for placing different reinforcement shapes and sizes.



- Standard spacing: 25mm / 1"
- Standard range:  $\varnothing$  8 to 20mm / #2 to #6
- Alternative spacing/gripping options available







## Flexible JIG Parts

Our flexible JIG Parts allow you to quickly build a Setup to fit your requirements.




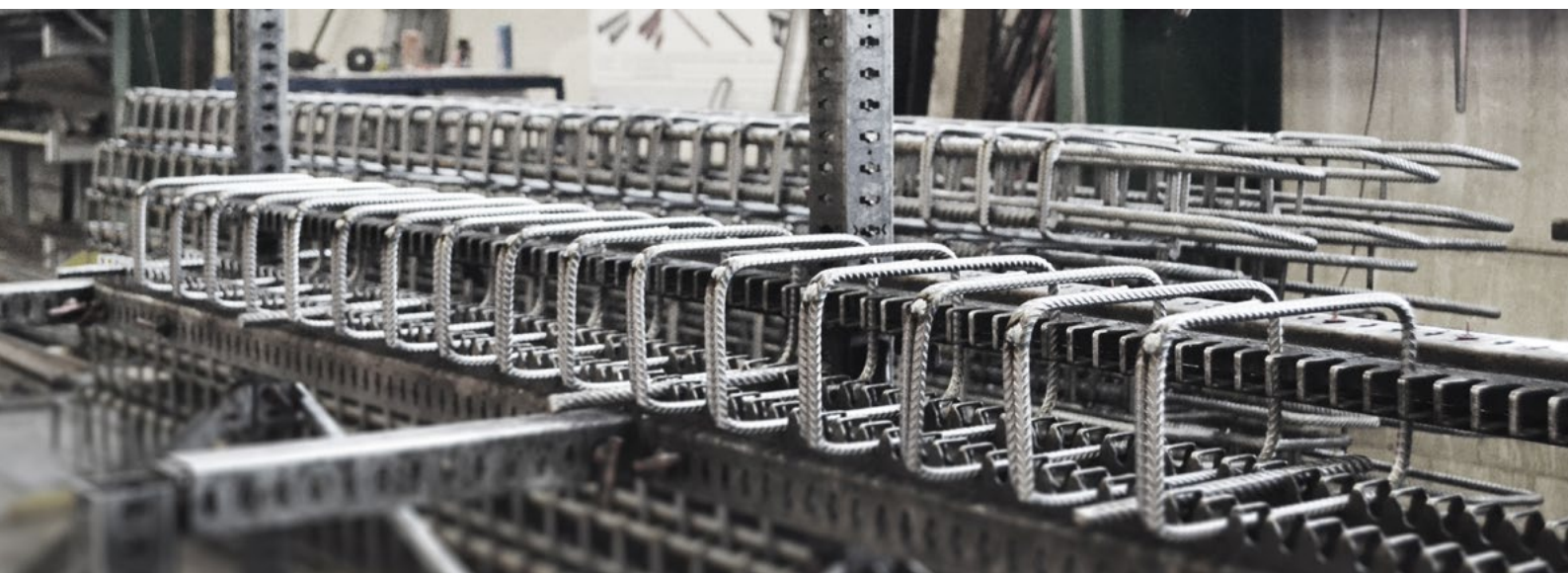
 Standard JIG Parts

 Easily assembled



 Quick locks (quarter turn)

 No bolts, nuts or tooling required

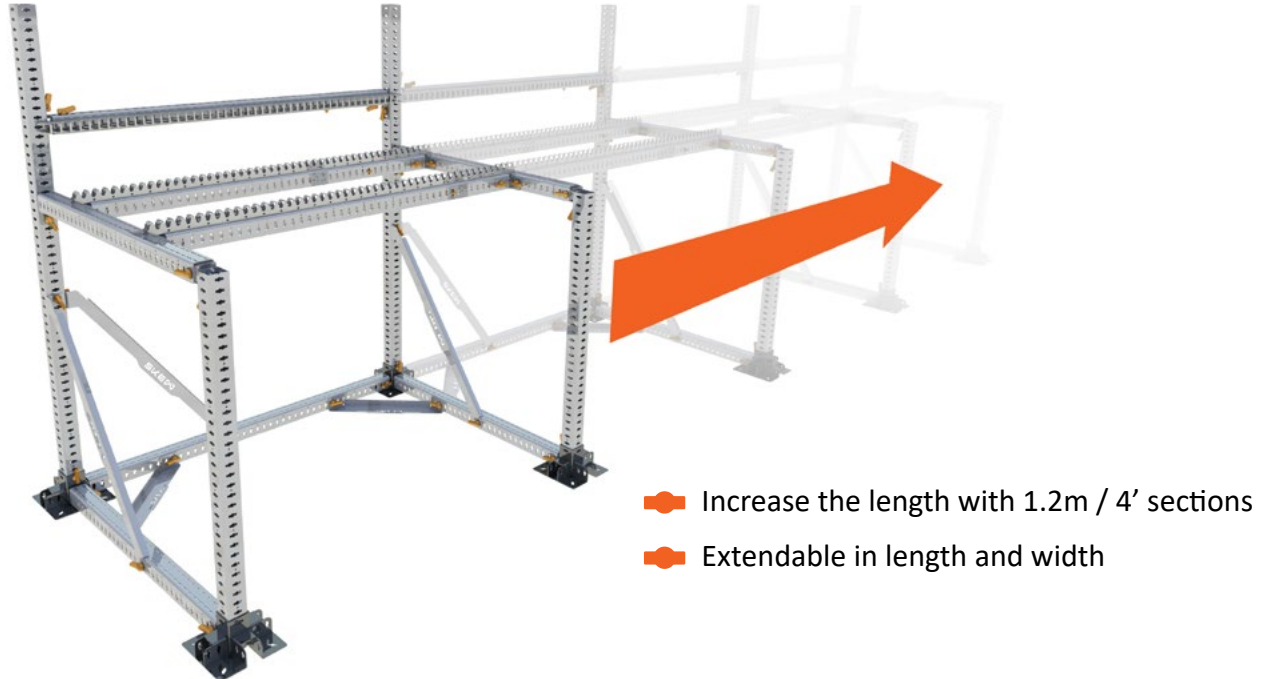




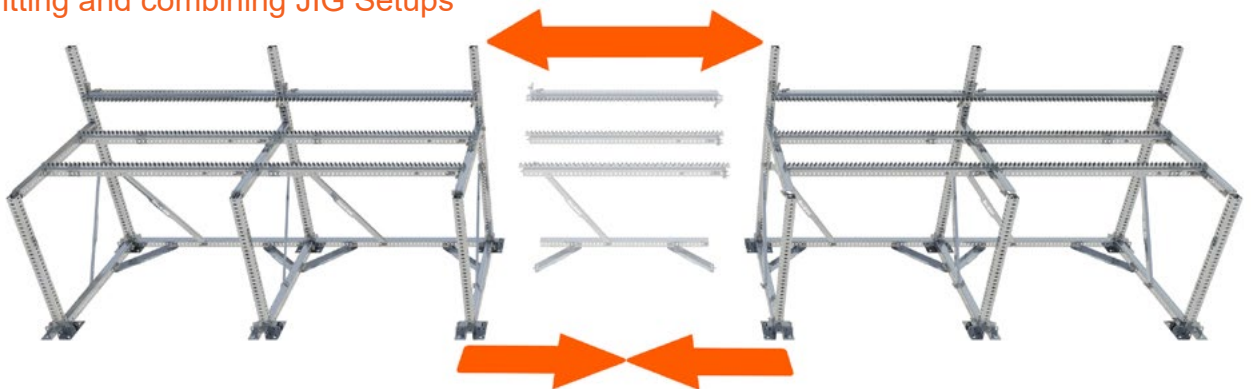
## Modular JIG System

Due to its modular nature, the JIG System can be rearranged in many ways. It is easy to build, extend, split or combine JIGs. It is also possible to rebuild your JIG Setup into a completely different solution.

### Extending JIG Setups by adding sections



### Splitting and combining JIG Setups



### Rebuilding or rearranging a JIG Setup



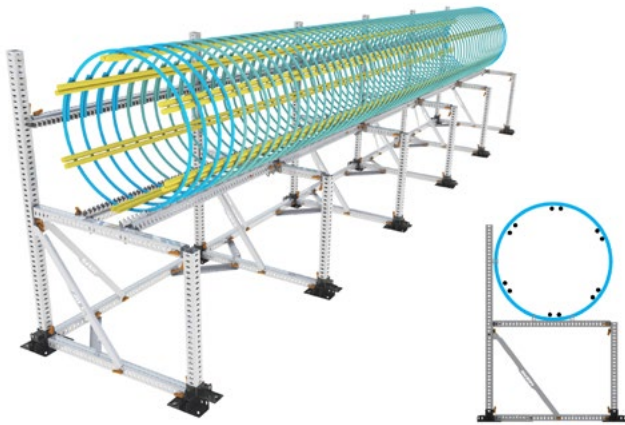



## SKEW JIG - Bench Setup

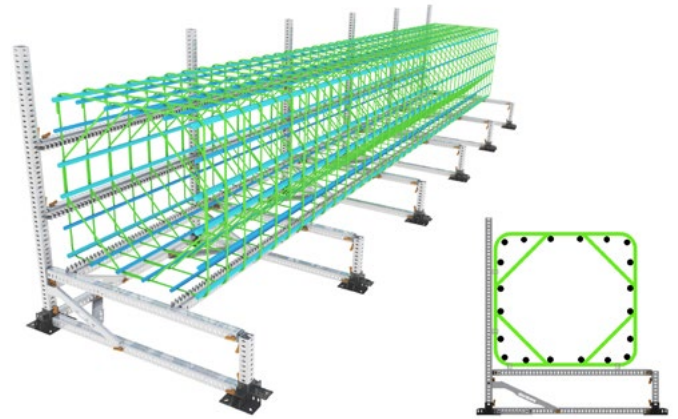
The Bench Setup is typically used for reinforcement elements such as beams, pile cages and columns, either for on-site construction or the precast industry.








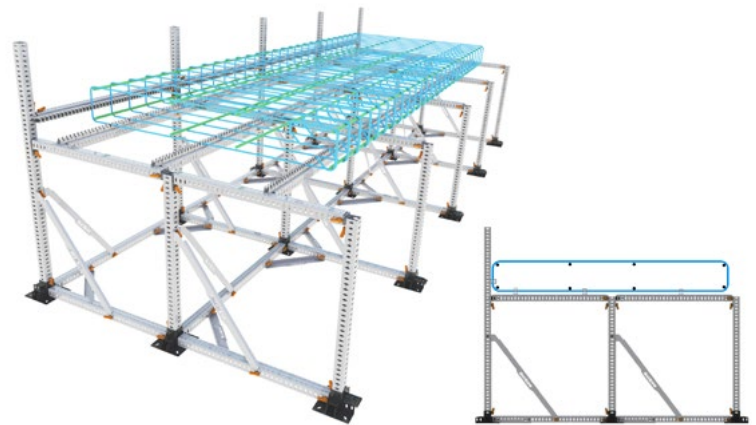
 Bench Setup 6.0 x 0.9m (70cm working height)  
 20 x 3' (2' 4" working height)



 Bench Setup 6.0 x 1.2m (30cm working height)  
 20 x 4' (1' working height)



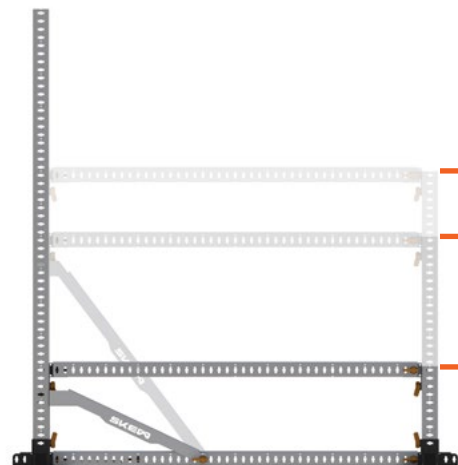
 Bench Setup 8.4 x 0.6m (90cm working height)  
 28 x 2' (3' working height)



 Bench Setup 4.8 x 1.8m (90cm working height)  
 16 x 6' (3' working height)



Width: 0.6m 0.9m 1.2m  
 2' 3' 4'



Height:  
 0.9m 3'  
 0.7m 2' 4"  
 0.3m 1'

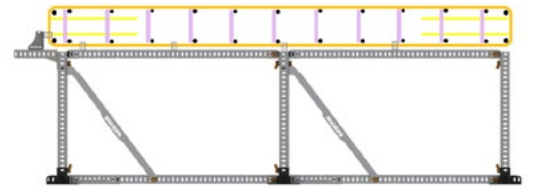
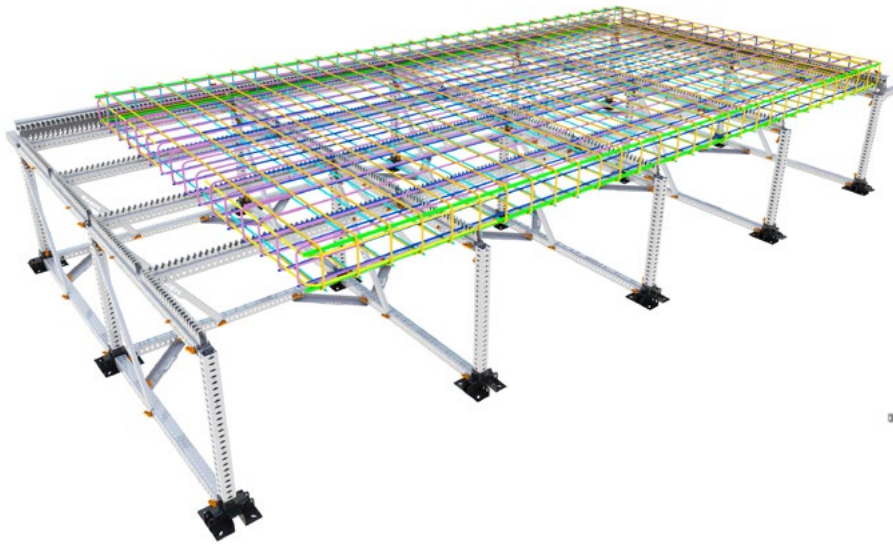
Length: 1.2m / 4' long JIG sections


## SKEW JIG - Table Setup

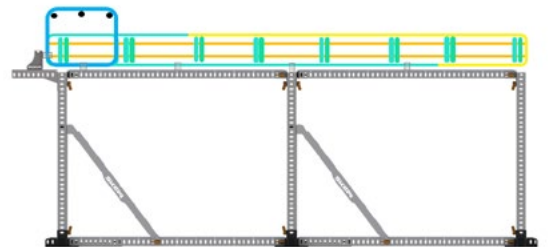
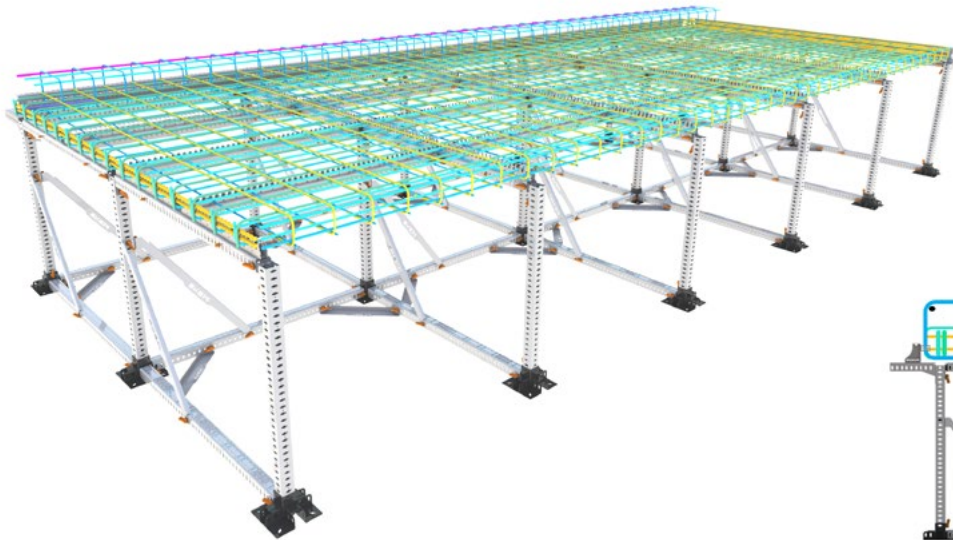
The SKEW JIG Table Setup is suitable for flat elements and larger surfaces. The Setup allows positioning of reinforcement in perpendicular directions. It is most commonly used for mesh shapes, precast balcony elements, panels, wall elements etc.




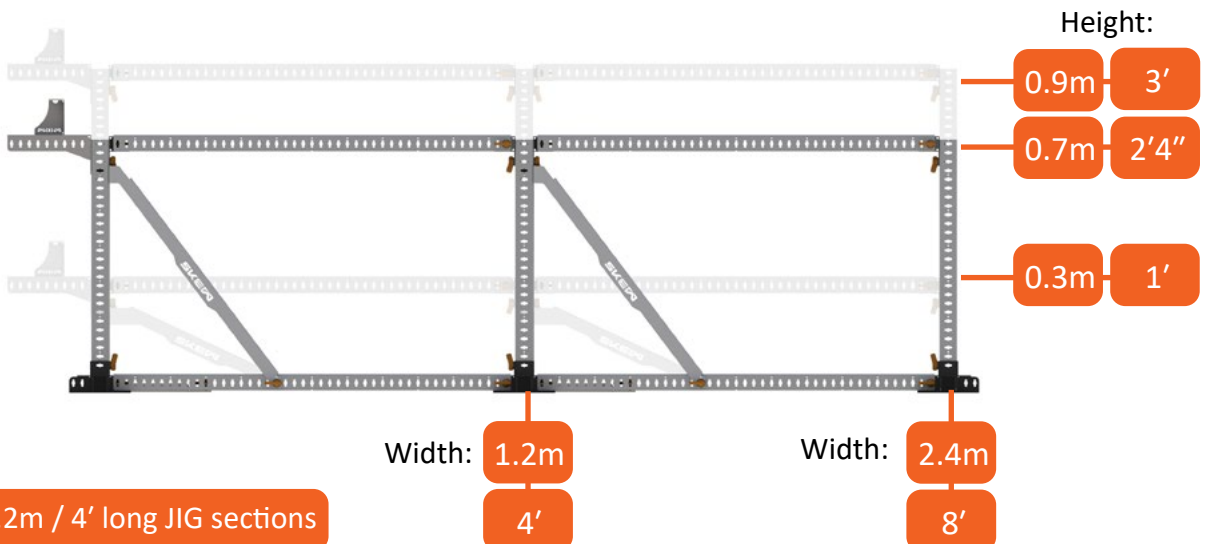




 Table Setup 4.8 x 2.4m (70cm working height)  
 16 x 8' (2' 4" working height)



 Table Setup 6.0 x 2.4m (90cm working height)  
 20 x 8' (3' working height)



## Precast Structural Elements



### Beams

Square Beams, T-beams  
and Ground Beams



### Columns

Columns with footings, Consoles etc.



### Balcony Elements

Balcony Slabs and Precast Balconies



### Staircases

Precast Stairs and Landings



### Wall Elements

Wall Elements, Wall Edging,  
Column Walls and Shear Walls



### Beam Soffits

Beam Soffits and Floor Beams



### Lift Shafts

Lift Shafts, Elevator Pits  
and Elevator Core Shafts

 SKEW



### Staircases



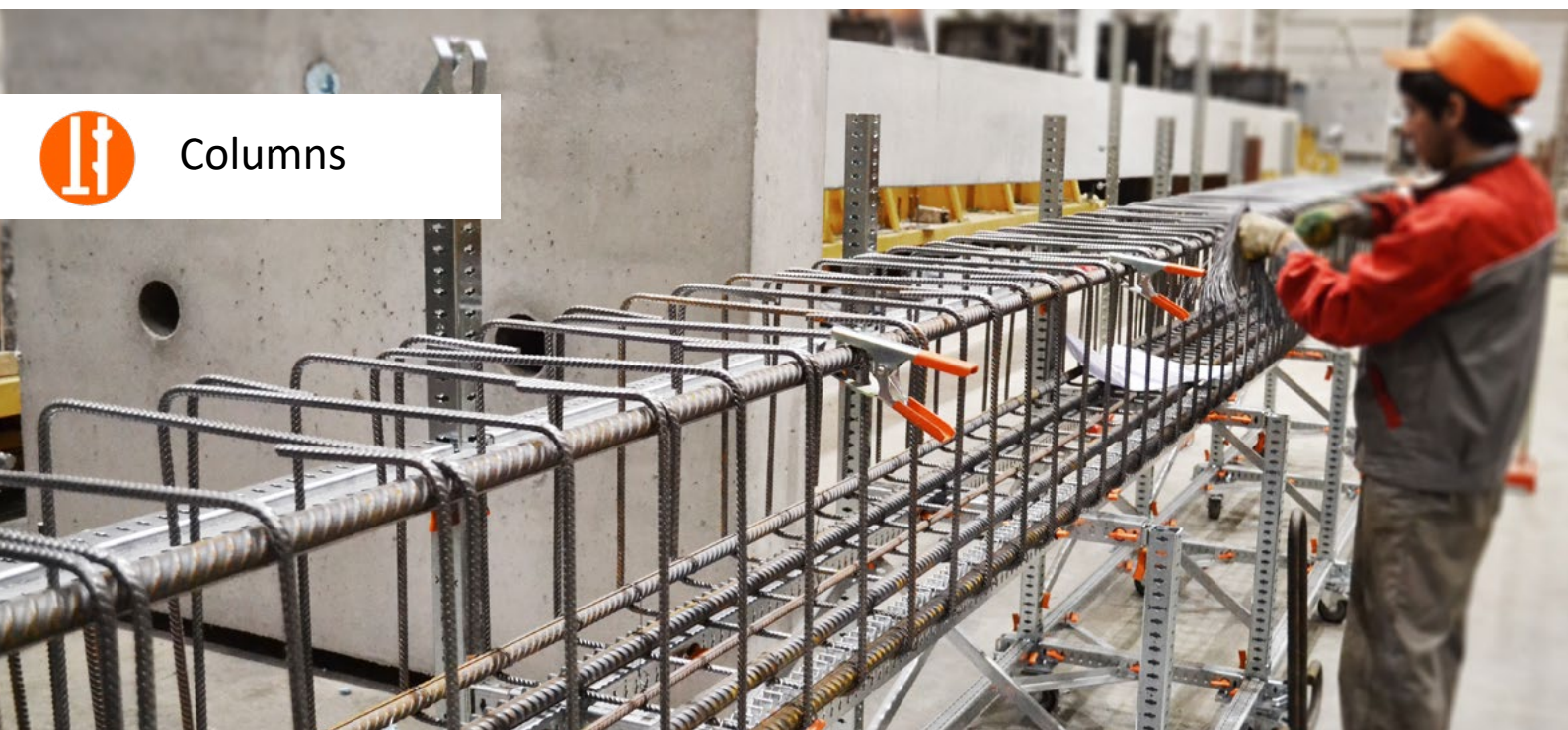




Beams



Columns



Wall Elements





## Precast Infrastructure Elements



**Box Culverts**  
Box Culverts and U Culverts



**U Channels**  
U Channels, Drainage Channels  
and small Culvert Systems



**Retaining Walls**  
Retaining Walls, T-Walls and L-Walls



**Barriers**  
Crash Barriers and Jersey Barriers



**Slabs**  
Precast Concrete Slabs, Panels  
and Floors



**Bridge Elements**  
Bridge Beams, Bridge Columns and Girders



**Railroad Elements**  
Level Crossing Slabs, Deck Units  
and Station Platforms



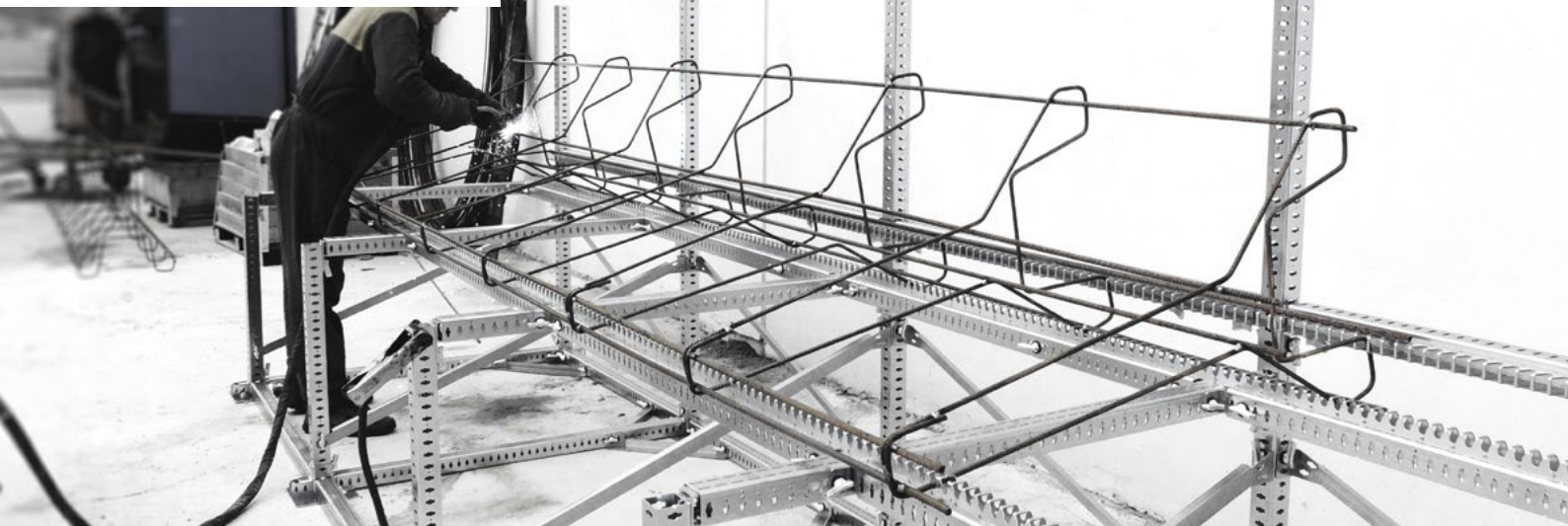
**Box Culverts**







Barriers



U Channels



Slabs





## Typical Reinforcement Elements and Foundations



### Ground Beams

Ground Beams, Foundation Beams and Connecting Beams



### Reinforcement Edging

Wall Edging, Floor Edging, Corners and Connecting Reinforcement



### Foundation Elements

Foundation Elements, Square Cages, Pocket Foundations and Spread Footings



### Pile Caps

Pile Caps and Column Caps



### Pile Cages

Round Pile Cages (individual rings)



### Diaphragm Walls

Diaphragm Walls and Slurry Walls



### Special Mesh

Special Mesh and Mats



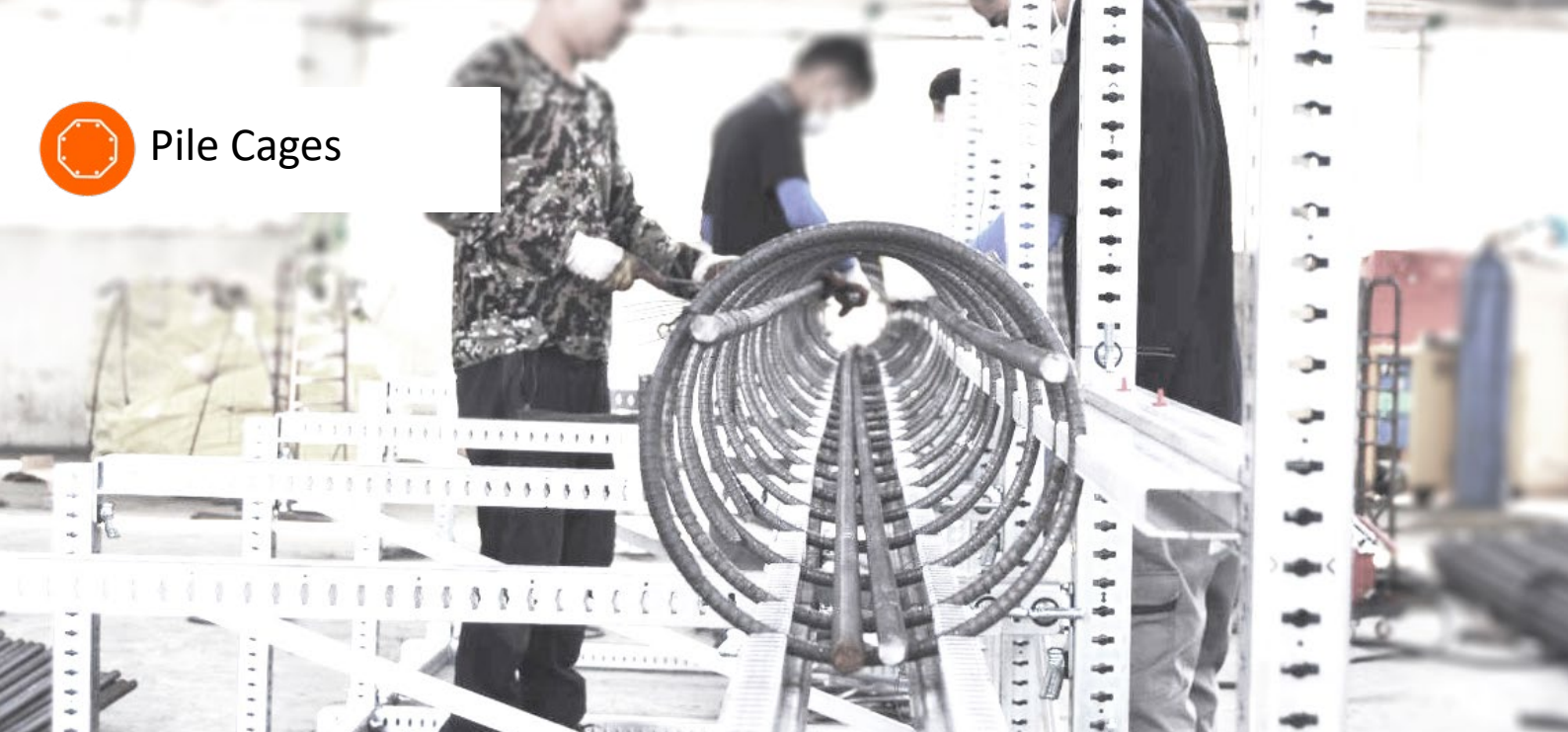
### Diaphragm Walls



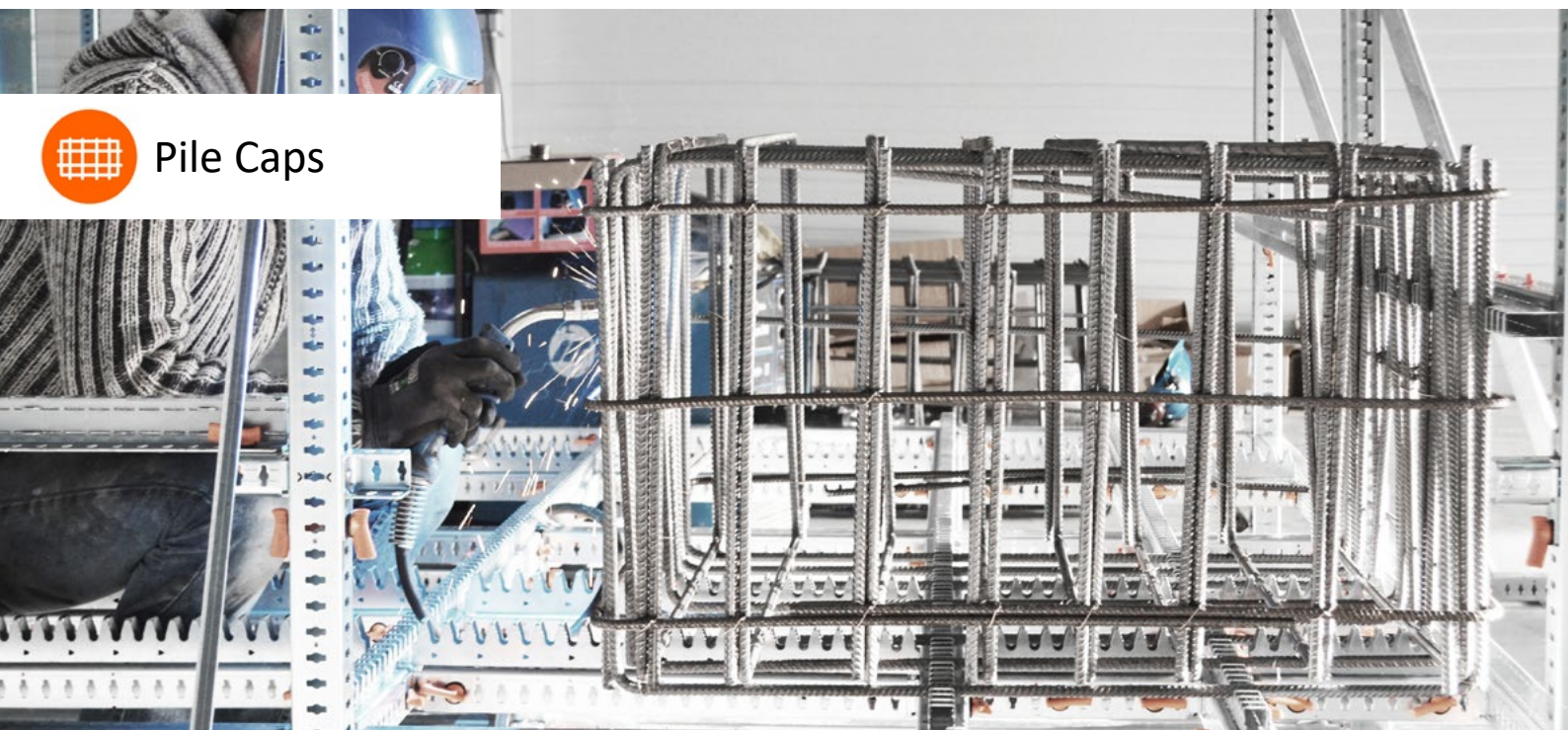




Pile Cages



Pile Caps



Special Mesh







## What we offer:

SKEW offers a wide range of JIG System solutions:

- Standard JIG Setups
- Tailored JIGs
- Flexible JIG Packages
- Add-ons and Extensions
- Assembly Tooling
- Service and Support

**GET YOUR PERSONAL  
JIG PROPOSAL HERE!**

**[www.skew.nl/contact](http://www.skew.nl/contact)**







## SKEW Engineering Services

In addition to standard JIG Systems, SKEW also offers custom solutions for specific projects.

Work with our engineers to translate your bespoke projects to a fitting JIG solution.

### 1. Provide a Drawing

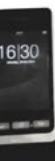
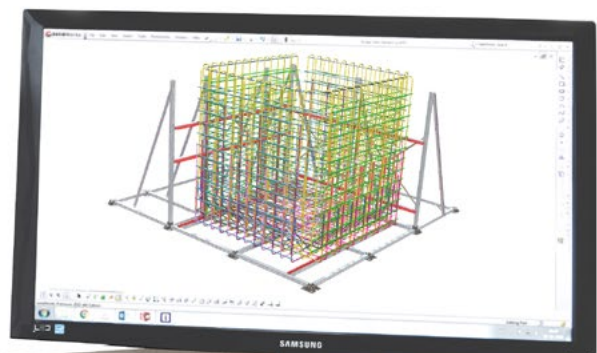
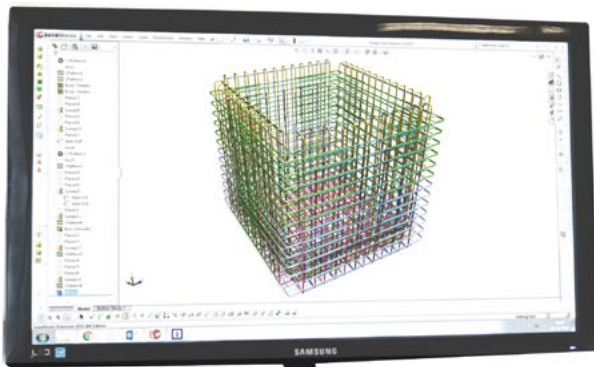
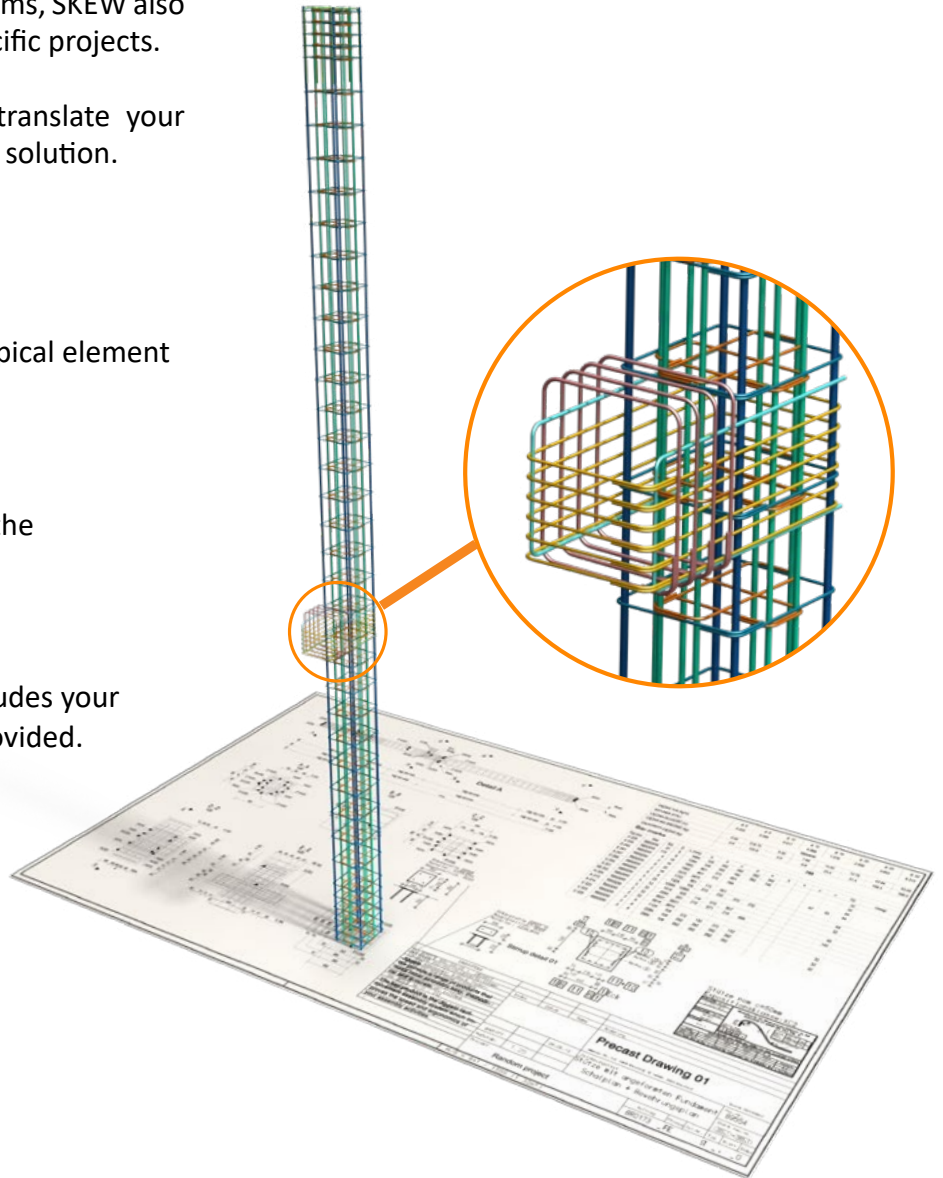
Send SKEW a drawing of your typical element or bespoke project

### 2. Analysis by SKEW

Our engineering team analyses the reinforcement drawing.

### 3. Tailored JIG Proposal

A detailed JIG proposal that includes your specific requirements will be provided.







## About us

SKEW Accessories B.V., est. 2004, is a Dutch company active in the rebar prefabrication industry with clients in over 40 countries around the world.

With a keen interest in improving standards, our team of engineers developed a modular workbench specifically for the purpose of tying and/or welding rebar.

Focusing on key principles such as quality, speed and safety, the SKEW JIG System was created. With over 20 years of experience, we provide assembly solutions for both daily use and specific projects.









# Reinforcement Assembly Solutions



**SKEW**

SKEW Accessories B.V.  
Zonnenbergstraat 34 | 7384 DL Wilp | The Netherlands  
Tel: +31 (0)571 260115  
Website: [www.skew.nl](http://www.skew.nl)  
Mail: [info@skew.nl](mailto:info@skew.nl)

